



MC405 CRM(E) Mini Crane

The MC405 is the most powerful of the MC range mini cranes with an outstanding 3.83 tons of lifting capacity. The optional fly jib increases the already impressive working range even further. This fantastic model also has an unique pick and carry feature of up to 500kg.



Features at a glance...

- 3.83Ton Max capacity
- 16.8m Max Working Height (MWH)
- 20.7m (MWH) With Optional Fly Jib
- 500kg Pick & Carry Duty
- Energy Saving System
- Sheaves Protected Inside Boom
- Variable (Hi/Lo) Travel Speeds
- Programmable Moment Limiter
- Hydrostatic Transmission
- Centralized Controls
- 4 Fall / 2 Fall Hook Block
- Automatic Hook Stowage System
- Tilt Sensor/Alarm
- Powerful Two Speed Winch
- Hydraulic Disc Brake
- Remote Control
- Outrigger Interlock System
- 2 Year Warranty

More Images...



Glazing



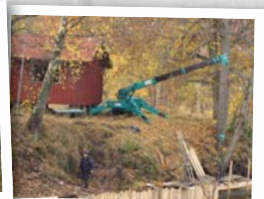
Timber Frame Work



Pick and Carry



Restricted Access



Uneven Ground

... consider the possibilities



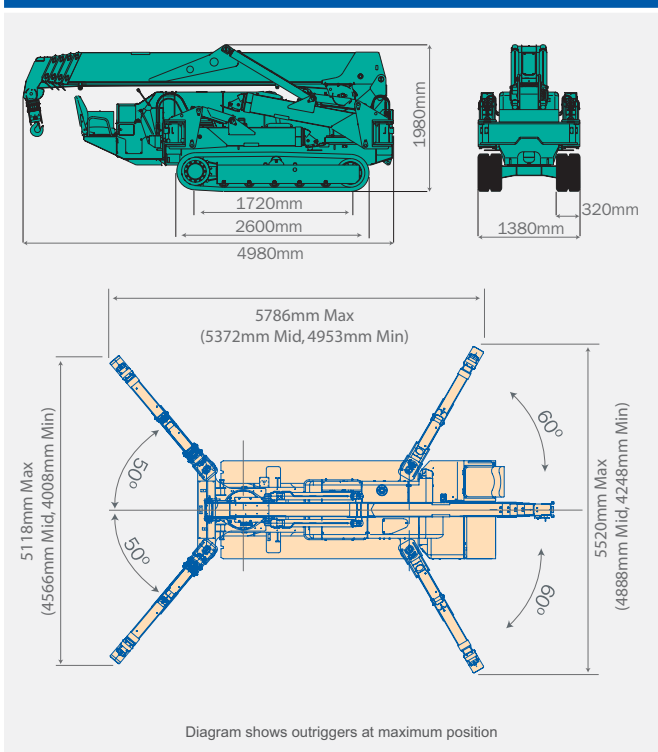
Specifications

| | | |
|---------------------------|---|--|
| Capacity | Maximum | 3.83 t x 2.7m |
| Working Radius | Maximum | 16.0m x 210kg |
| Lifting Height | Maximum | 16.8m x 1130kg (20.7m x 520kg with Fly-Jib) |
| Dimensions | MC405 CRM(E) | 4980mm x 1380mm x 1980mm |
| Weight | MC405 CRM | 5600kg |
| | MC405 CRME | 5750kg |
| Hook Speed | Maximum | 18m / min (4 falls, 4th layer) |
| Single Line Speed | Maximum | 72m / min. (4th layer) |
| Hoist Rope | Type | IWRC 6 x WS (26) Ø 8mm x 92m |
| Telescopic System | Boom length | 4.735m - 16.475m |
| | Telescoping speed | 11.7m / 54.2 sec (41.3sec) |
| | Boom type | Fully automatic 5 section pentagonal telescopic boom |
| Boom Hoist System | Hoist angle / speed | 0° - 80° / 24.5 sec (17 sec) |
| Slew System | Slew angle / speed | 360° continuous / 2.1rpm (2.5 rpm) |
| Outrigger System | Type | Extension and set-up by hydraulic cylinders. |
| | Maximum extended dimensions | (Length) 5786mm x (Front) 5118mm x (Rear) 5520mm |
| Traction System | Drive | Hydraulic motor driven, stepless speed changer |
| | Travel speed | 0 - 3.3 km/h |
| | Gradability | 20° |
| | Ground length x width | 1720mm x 320mm (Track dimensions) |
| Engine | Ground pressure | 0.50 kgf / cm ² (0.52 kgf / cm ² CRME) |
| | Model | Yanmar 3TNV88-BPMB |
| | Type | 3 cylinder water cooled diesel |
| | Rated output | 21.4 Kw / 2400 rpm |
| | Starting method | Electric |
| Electric Motor (Optional) | Fuel tank capacity | Diesel / 60L |
| | Type | Fully enclosed fan cooled motor |
| Standard Equipment | Size | 7.5 Kw 4P 380V |
| | Overwind protection, hydraulic safety valves, wire rope latch, level, machine body inclination alarm, EMO switch, travel lock lever, outrigger interlock device, moment limiter, working status lamp, hour-meter, 4-fall / 2-fall hook block, black rubber tracks and cable remote control. | |
| Optional Equipment | Radio remote control, white rubber tracks, single fall hook, searcher hook and fly-jib. | |

Maximum Reach Below Ground Level

| | | |
|-----------|----------|-------------|
| Four Fall | Two Fall | Single Fall |
| 20.50m | 41.00m | 82.00m |

Dimensions



Total rated load Outriggers at Maximum position

| 4.735m/7.695m boom | | 10.655m boom | | 13.565m boom | | 16.475m boom | |
|--------------------|-----------------------|--------------------|-----------------------|--------------------|-----------------------|--------------------|-----------------------|
| Working radius (m) | Total rated load (kg) | Working radius (m) | Total rated load (kg) | Working radius (m) | Total rated load (kg) | Working radius (m) | Total rated load (kg) |
| < 2.7 | 3830 | 3.5 | 3030 | 4 | 2230 | 5 | 1130 |
| 3.5 | 3030 | 4 | 2580 | 4.5 | 1930 | 5.5 | 980 |
| 4 | 2580 | 5 | 2030 | 5 | 1730 | 6 | 910 |
| 5 | 2030 | 6 | 1680 | 6 | 1400 | 7 | 760 |
| 6 | 1680 | 7 | 1380 | 7 | 1180 | 8 | 650 |
| 7 | 1380 | 8 | 1130 | 8 | 1030 | 9 | 600 |
| 7.25 | 1330 | 9 | 880 | 9 | 930 | 10 | 550 |
| | | 10.2 | 580 | 10 | 830 | 11 | 490 |
| | | | | 11 | 690 | 12 | 440 |
| | | | | 12 | 530 | 13 | 380 |
| | | | | 13.1 | 430 | 14 | 320 |
| | | | | | | 15 | 260 |
| | | | | | | 16 | 210 |

Total rated load Outriggers at Middle position

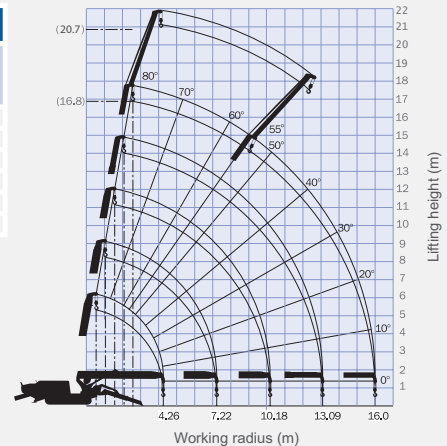
| 4.735m/7.695m boom | | 10.655m boom | | 13.565m boom | | 16.475m boom | |
|--------------------|-----------------------|--------------------|-----------------------|--------------------|-----------------------|--------------------|-----------------------|
| Working radius (m) | Total rated load (kg) | Working radius (m) | Total rated load (kg) | Working radius (m) | Total rated load (kg) | Working radius (m) | Total rated load (kg) |
| < 2.7 | 3830 | 3.5 | 3030 | 4 | 2230 | 5 | 1130 |
| 3.5 | 3030 | 4 | 2580 | 4.5 | 1830 | 5.5 | 980 |
| 4 | 2580 | 5 | 1880 | 5 | 1630 | 6 | 910 |
| 5 | 1880 | 6 | 1430 | 6 | 1330 | 7 | 730 |
| 6 | 1430 | 7 | 1130 | 7 | 1080 | 8 | 630 |
| 7 | 1160 | 8 | 880 | 8 | 880 | 9 | 550 |
| 7.25 | 1120 | 9 | 740 | 9 | 730 | 10 | 480 |
| | | 10.2 | 490 | 10 | 530 | 11 | 430 |
| | | | | 11 | 480 | 12 | 380 |
| | | | | 12 | 430 | 13 | 330 |
| | | | | 13.1 | 330 | 14 | 280 |
| | | | | | | 15 | 220 |
| | | | | | | 16 | 180 |

Total rated load Outriggers at Minimum position

| 4.735m/7.695m boom | | 10.655m boom | | 13.565m boom | | 16.475m boom | |
|--------------------|-----------------------|--------------------|-----------------------|--------------------|-----------------------|--------------------|-----------------------|
| Working radius (m) | Total rated load (kg) | Working radius (m) | Total rated load (kg) | Working radius (m) | Total rated load (kg) | Working radius (m) | Total rated load (kg) |
| < 2.7 | 3830 | 3.5 | 3030 | 4 | 2230 | 5 | 1130 |
| 3.5 | 3030 | 4 | 2580 | 4.5 | 1830 | 5.5 | 980 |
| 4 | 2580 | 5 | 1680 | 5 | 1630 | 6 | 880 |
| 5 | 1680 | 6 | 1180 | 6 | 1180 | 7 | 730 |
| 6 | 1180 | 7 | 880 | 7 | 830 | 8 | 530 |
| 7 | 930 | 8 | 730 | 8 | 680 | 9 | 450 |
| 7.25 | 780 | 9 | 580 | 9 | 550 | 10 | 420 |
| | | 10.2 | 400 | 10 | 430 | 11 | 370 |
| | | | | 11 | 380 | 12 | 330 |
| | | | | 12 | 350 | 13 | 280 |
| | | | | 13.1 | 310 | 14 | 240 |
| | | | | | | 15 | 190 |
| | | | | | | 16 | 150 |

Working Range Diagram & Fly Jib total rated load chart

| Fly Jib | |
|------------------|-----|
| Boom angle (deg) | kg |
| 72+ | 520 |
| 69 | 420 |
| 66 | 320 |
| 63 | 250 |
| 60 | 220 |
| 55 | 170 |



The Working Range Chart does not take into account boom deflection under load.