

# MC-305C

**Lifting Capacity : 2.93 ton X 2.5m**

## Foster Crane & Equipment Limited

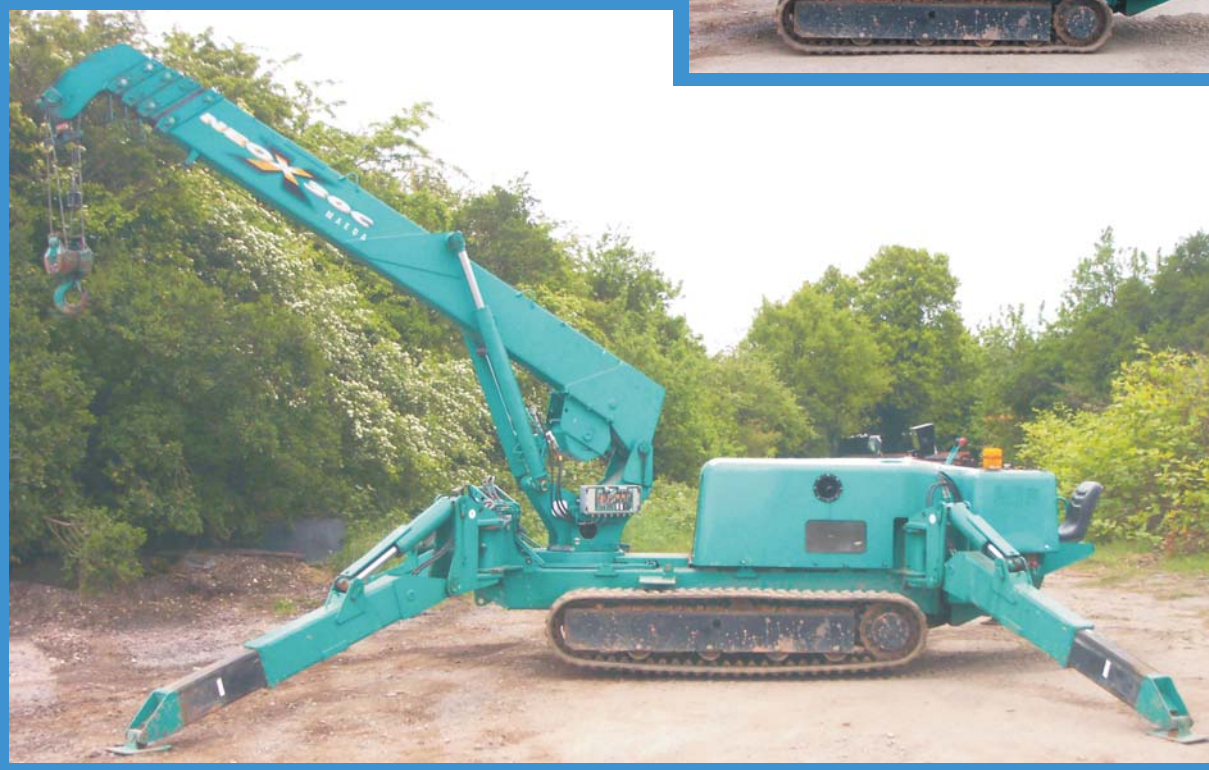
Mobile Cranes Specialists - Earthmoving Equipment Suppliers  
UNIT 2A, DUNSTALL COURT, ASTWOOD LANE, FECKENHAM, B96 6QH

Tel: +44 (0) 1527 894 400

Fax: +44 (0) 1527 894 940

E-mail: [andrewfoster@fostercranes.co.uk](mailto:andrewfoster@fostercranes.co.uk)

Web: [www.fostercranes.co.uk](http://www.fostercranes.co.uk)



## Foster Crane & Equipment Limited

Mini crane hire - for use in places you never before thought possible:

Mini crawler cranes are perfect for so many applications, our new 3 ton capacity rubber tracked cranes are just over 1m wide in travel mode and can be set up and ready to work in under 5 minutes. Operator training is given at the time of hire, or we can supply a fully qualified operator if required. The cranes are equipped with all necessary safety features and offer lifting options that are just not available with conventional All terrain and Truck mounted cranes.

Mini cranes are suitable for the following types of work:

- Construction and Domestic sites
- Construction and Engineering
- Glass Lifting and Glazing
- Forestry
- Rail track maintenance
- Shop fitting
- Specialist restoration work
- Local Authority projects

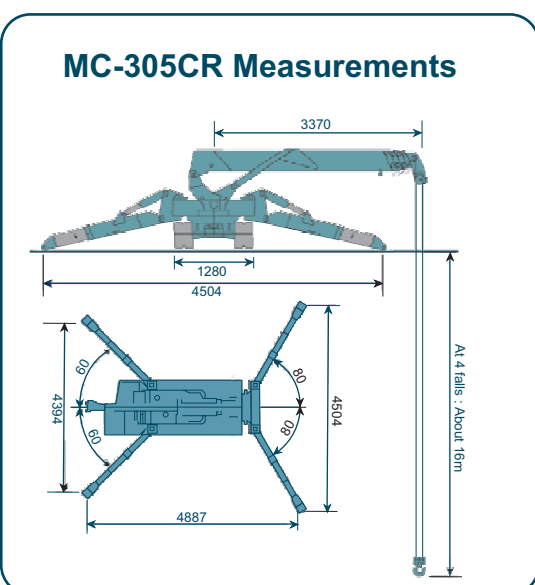
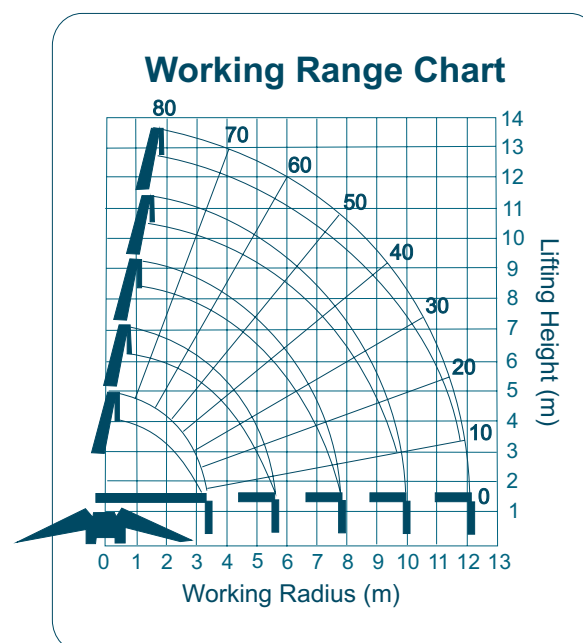


## MC-305CR Key Features

- Speed Options:** Dual and variable speed available
- Moment Limiter:** Moment Limiter with restricted area mode standard for CE Specification
- Rubber Tracks:** Optional white rubber tracks available for use on shop floors, polished concrete, etc
- Centralised Outrigger Controls:** Centralised controls allow you to extend outriggers and level the crane
- Quick assembly/disassembly:** Version available as option. The machine can be easily broken down into five units, each weighing less than a 1000kg and can be quickly reassembled on site
- Automatic Hook Stowage System:** Convenient automatic stowage of the hook block, removing the need to anchor the hook during travel
- Fully automatic pentagonal box section boom:** High tensile steel 5-stage telescopic pentagonal box section boom
- Radio Control:** Optional Radio Control
- Cable Remote Controller:** Cable type Remote Controller

## MC-305CR Specifications

Model	MC-305CR
Crane Capacity	2.93x2.50m
Max. Working Radius	12.16m
Max. Hook Height	5-section hydraulically telescoping boom of pentagonal box construction
Boom	3.695 x 12.485m
Boom Length	2 X Direct Push type Hydraulic Cylinders
Luffing System	360 continuous, by a hydraulic motor
Travelling System	Hydrostatic transmission
Travelling Speed	Dual & variable, 2.2km/h, 3.0km/h
Gradability	23.5
Fuel/ Fuel Tank Capacity	Diesel / 37L
Control System	Levers, and either Cable type or Wireless Radio type Remote Controller
Engine	Yanmar diesel engine "3TNE74-MN1" 14kw/2,530min
Dimensions (LXWXH)	4.115 x 1.280 x 1.695 mm
Machine Weight	3,770 kg
Standard Equipment	Cable type Remote Controller (R)
Options	Moment Limiter (M) (CE Standard) Electric Motor Option (E) White Rubber Tracks One touch couplers for hydraulic hoses Single fall hook block Indicator for outrigger setting



5.945m boom		8.145m boom		10.315m boom		12.485m boom	
Working Radius	Total Rated Load (kg)	Working Radius	Total Rated Load (kg)	Working Radius	Total Rated Load (kg)	Working Radius	Total Rated Load (kg)
Less than 2.5	2930	2.7	2270	4.0	1060	Less than 4.5	775
3.0	2350	3.0	2090	4.5	950	5.0	640
3.5	1850	3.5	1680	5.0	860	6.0	495
4.0	1670	4.0	1415	6.0	750	7.0	410
4.5	1450	4.5	1230	7.0	645	8.0	360
5.0	1300	5.0	1070	8.0	540	9.0	320
5.62	1120	5.5	950	9.0	490	10.0	290
		6.0	855	9.99	415	11.0	260
		7.0	700			12.16	250
		7.82	610				

### Foster Crane & Equipment Limited

Mobile Cranes Specialists - Earthmoving Equipment Suppliers  
 UNIT 2A, DUNSTALL COURT, ASTWOOD LANE, FECKENHAM, B96 6QH  
 Tel: +44 (0) 1527 894 400 Fax: +44 (0) 1527 894 940  
 E-mail: [andrewfoster@fostercranes.co.uk](mailto:andrewfoster@fostercranes.co.uk)  
 Web: [www.fostercranes.co.uk](http://www.fostercranes.co.uk)

