



**Making Tree Work Safe and Efficient**



**Grapple Saws**

**Sets & Accessories**

**[www.gmt-equipment.com](http://www.gmt-equipment.com)**



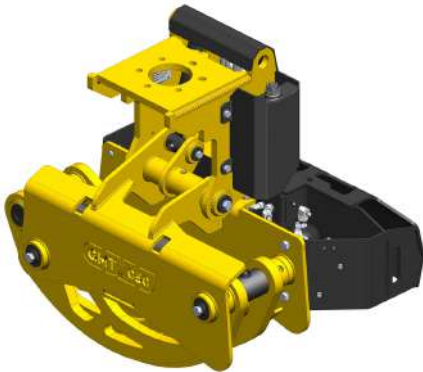
# Grapple saws | Models

To make life easier, there are only two grapple saw models to choose from. The GMT035 grapple size is smaller and, therefore, more flexible when it comes to working in the canopy of a tree. This will ensure there is no risk of hitting other branches. The GMT050 could be more favorable because of the bigger cutting diameter and grapple capacity.

GMT 035



GMT 050



**Dimensions**


Maximum opening width	85 cm   33"	122 cm   48"
Sawing blade length	52 cm   20"	70 cm   28"
Maximum saw diameter of a single cut	Ø 40 cm   16"	Ø 55 cm   22"
Maximum saw diameter of a double cut	Ø 60 cm   24"	Ø 80 cm   32"
Minimum saw diameter	Ø 5 cm   2"	Ø 8 cm   3"

**Weights**

Grapple saw weight *	275 kg   605 lb	420 kg   925 lb
Maximum load	1500 kg   3300 lb	2500 kg   5500 lb

**Hydraulics**

Recommended oil supply	35 – 65 litre/minute   9.3 – 17.2 gal/min	45 – 65 litre/minute   11.9– 17.2 gal/min
Minimum working pressure	185 bar   2683 psi	185 bar   2683 psi
Maximum working pressure	250 bar   3626 psi	250 bar   3626 psi

\*  For each vehicle type, you will find an indication of the total weight of a complete grapple saw set per model.

## Your carrying vehicle is decisive!

The greatest danger is underestimating the weight of the tree or branch being sawn. After sawing, the load becomes a hanging load for the machine! A commonly used method to determine the maximum load that can be cut is:

- find the maximum load mentioned in the load chart of the crane
- subtract the weight of the grapple saw set\*
- 50% of the weight that is left will be the maximum load of the limb or branch which is allowed to be removed when the load becomes a hanging load for the crane after cutting
- For an efficient tree job, an average of at least 250kg should remain!

# Grapple saws | Versions

Both GMT035 and GMT050 can be used as a standard, + and TTC-version. Your carrying vehicle, as well as the job you are planning to do with the GMT grapple saw, determines whether these versions have the required added value for your business. We have set-ups ready for every type of carrying vehicle based on 25 years of experience in the business.

## Standard

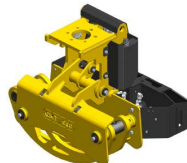
The standard GMT grapple saw will be operated like a normal wood grapple.

Therefore, your crane should be prepared with 2 double-acting hydraulic functions; 1 for the rotator left/right and 1 for operating the grapple functions (open + tilt-up/ close + saw function).

GMT 035



GMT 050



## Tilt-blocking (+) TTC-ready

With the GMT grapple saw + you have the option to block the tilt-cylinder at any convenient time. This might help you to position the grapple saw in the canopy of the tree and hold small and light weight tree pieces somewhat upright.

The standard grapple saw will be equipped with a control box with hand-held remote (A). This also makes the grapple saw TTC-ready!

GMT 035+



GMT 050+



## Total Tree Control (TTC)

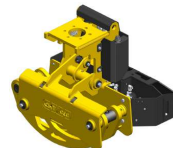
In specific activities or situations, it is important, or even a requirement, that sawn tree sections are held in position. The GMT Total Tree Control-system enables you to do so!

The TTC-package will be added to your 035+ or 050+. With this, you can block both tilt-cylinder as well as the cardanic suspension in both directions at the same time.

GMT 035 TTC



GMT 050 TTC



The GMT grapple saw will work with every crane-carrying vehicle. To make the grapple saw Plug & Play ready for yours, please select full sets with options on the next pages.

**GMT** **PLUG & PLAY**

# Explanation + and TTC-system control options:

Remote control integration  
with controls of the carrying  
vehicle

Receiver installed on  
GMT grapple saw  
(battery powered 12V)

1 Signal to the GMT grapple saw

Option A:



Use the GMT handheld  
transmitter (included)

Option B:



Use the GMT foot pedal, and simply  
insert your handheld transmitter

Option C:

Usage:

1. Push button  
on joystick
2. Foot pedal
3. Free signal from  
your crane remote

and make a wired connection with  
the GMT digital input transmitter  
(shown controls are examples and  
are not included in the set)

1.

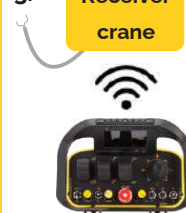


2.



3.

Receiver  
crane



## Remote controlled saw activation

Only available for + and TTC-version

- + Enhances feeling of safety and control
- Reduced battery life for tilt-locking and TTC-brakes



## Oil or grease lubrication

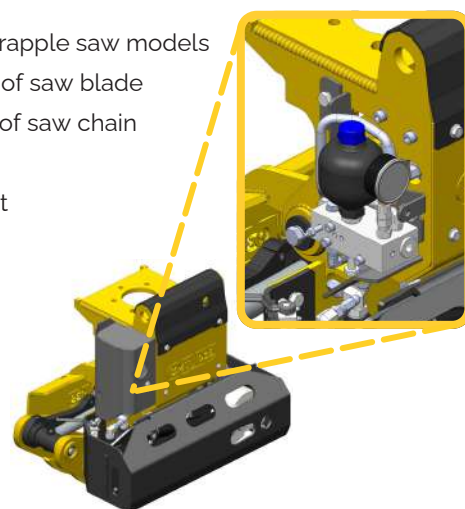


Recommended when working in city areas and on private  
property to prevent nasty purple stains on the street.  
Also, for cabin-operated vehicles, it is easier to clean your  
cabin windscreen.

Chain lubrication with oil is standard for all GMT grapple  
saws. Lubrication with grease is available as an option or  
as a retrofit kit for any existing GMT grapple saw.

### Benefits:

- Fits all GMT grapple saw models
- +40% lifespan of saw blade
- +25% lifespan of saw chain
- No oil spills
- Easy to retrofit





# GMT C10 quick coupler

Changing equipment on your crane is often a time-consuming task that could take an hour or even two. With our unique GMT C10 quick coupler system, you will be able to change attachments in no time.

The quick coupler is suitable for every type of crane and has a unique, robust design. The quick coupler is mounted between the rotator and the equipment.

The GMT C10 set consists of 1 Rotator plate and 2 Mounting plates. It also includes bolts, hydraulic quick couplers, and a special key.

Plates for 6x173mm or 4x140mm are interchangeable, but within an ordered set all plates are of one type! Additional plates to extend your GMT C10 set:

- Rotator plate (6 x 173mm)
- Mounting plate (6 x 173mm)
- Rotator plate (4 x 140mm)
- Mounting plate (4 x 140mm)
- Mounting plate with hook or swivel hook



GMT C10

25 kg | 55 lb



**Switch within 5 minutes between GMT grapple saw and other attachments!**







## Forestry machines

For forestry machines, we recommend a standard GMT grapple saw with the GMT C10 quick coupler. This set is ideal for a tractor, forwarder, skidder, trailer or chipper equipped with a forestry or recycling crane.

The GMT Grapple saw can be mounted onto your carrying vehicle without any modifications. The + version (tilt-blocking) could be an interesting feature.

Sawing trees, lowering sections to the ground, bundling or transporting: everything done by one team and with the same machine. An ideal set-up for tree maintenance in forests, parks, along roads, green spaces, wooded banks and much more.



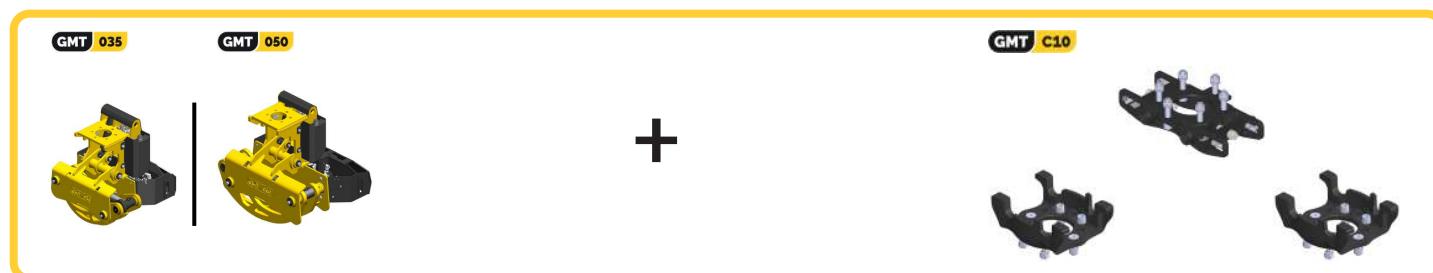
**GMT 035**

300 kg | 660 lb

**GMT 050**

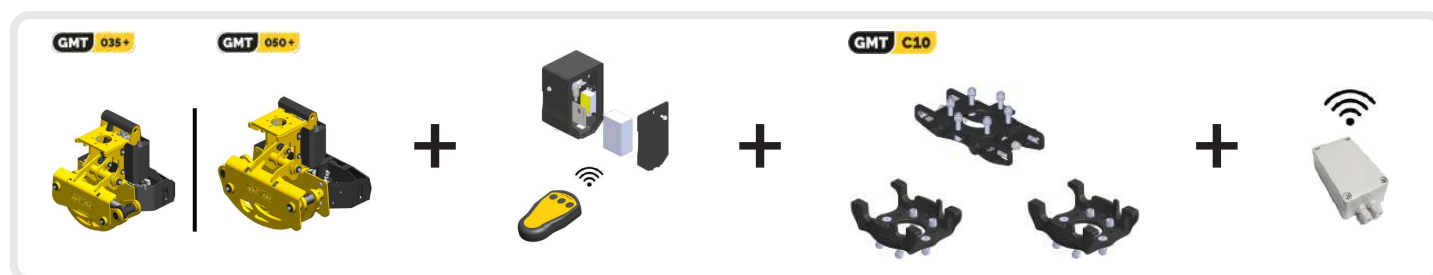
445 kg | 980 lb

### Recommended setup:



### Alternative setup:

For controlling the + version, a box transmitter (option C) is included to integrate with your crane controls.





## Forestry/recycling crane on trucks

For a forestry/recycling crane on a truck, we recommend a standard GMT grapple saw with GMT C10 quick coupler.

The + version (tilt-blocking) or TTC-version could be interesting alternative setups.

When choosing TTC-system, the TTC-package will replace the existing rotator and linkage. Please be aware of the following:

- The crane tip will become a little longer, this might affect folding your crane at your lorry
- Hydraulic hoses at the crane tip are less protected and might be vulnerable while loading/unloading wood



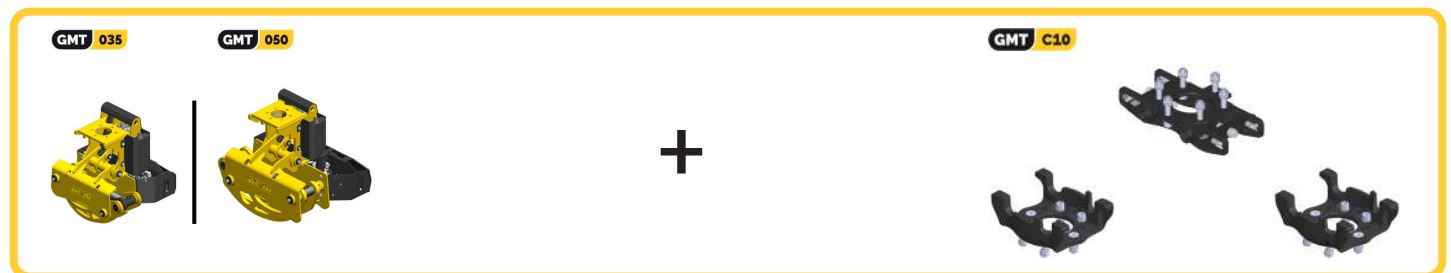
**GMT 035**

300 kg | 660 lb

**GMT 050**

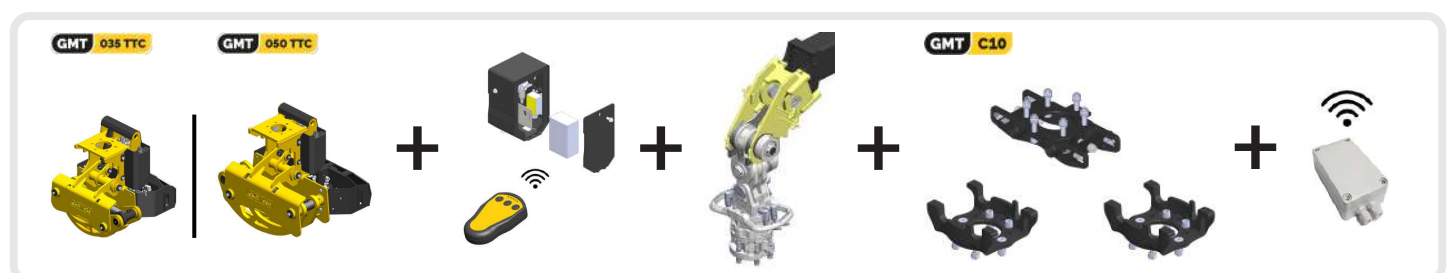
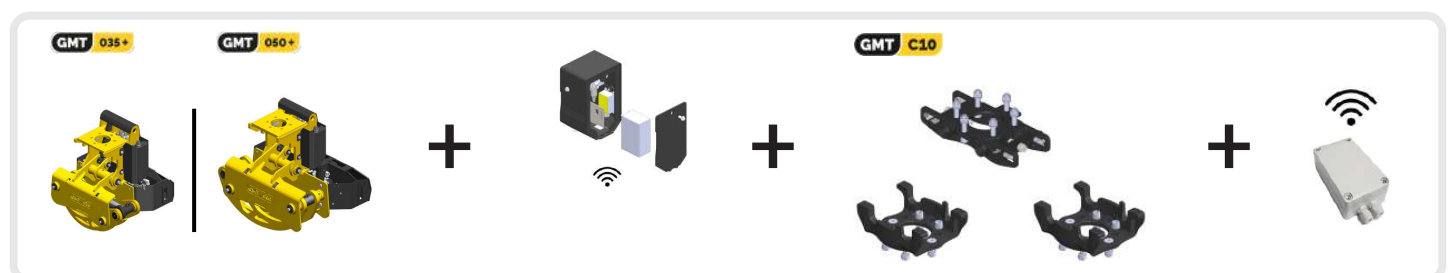
445 kg | 980 lb

### Recommended setup:



### Alternative setups:

For controlling the + and TTC-system, a box transmitter (option C) is included to integrate with your crane controls. For the TTC-system, a crane tip adapter is included with the set fitting your crane. We have most common brands available, but if required, GMT Equipment can provide customization services (design and fabrication) according to your carrying vehicles' specifications.








## Knuckle boom and spider crane

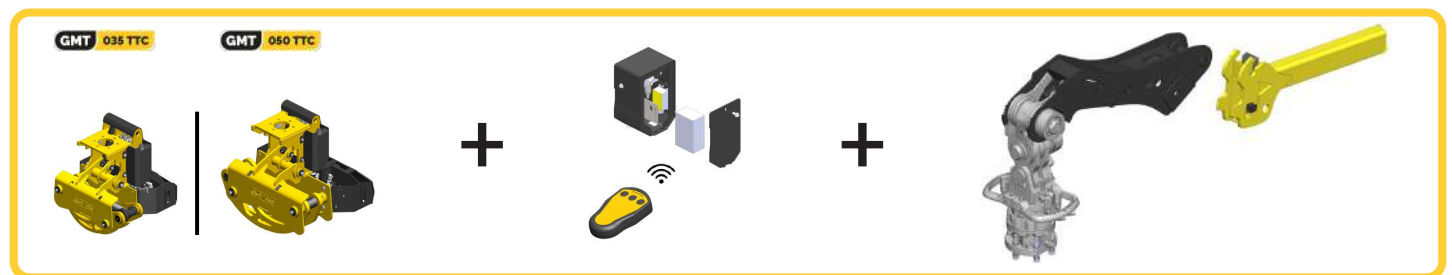
For knuckle boom cranes and spider cranes, we advise a GMT grapple saw with TTC-system.

We make a "one-size fits all" insert piece, which can easily be adapted to your crane locally. When ordering, we need some specific measurements and a detailed picture of the crane end so we can judge whether this will fit. If required, GMT Equipment can provide customization services (design and fabrication) according to your carrying vehicles' specifications.

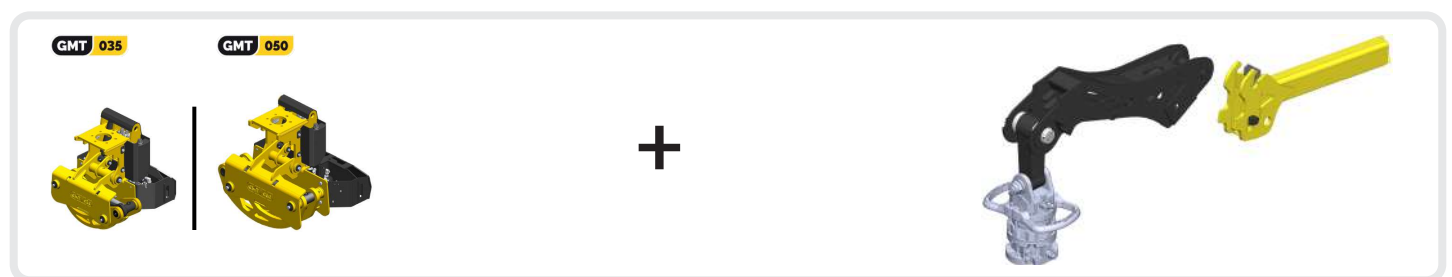


	<b>GMT 035</b>	500 kg   1100 lb
	<b>GMT 050</b>	645 kg   1420 lb

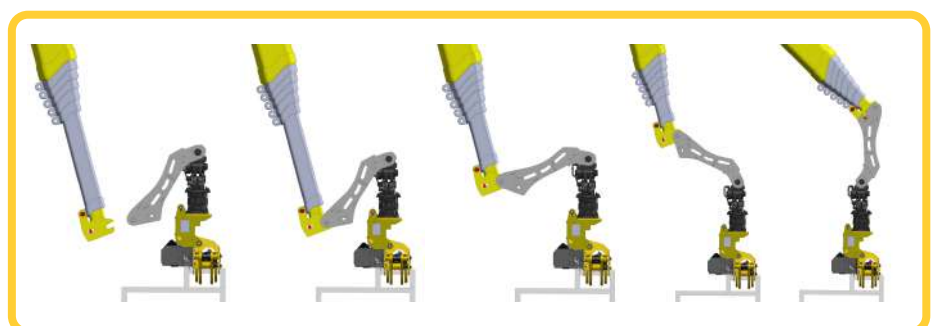
### Recommended setup:



### Alternative setup:



The GMT grapple saw set for knuckle boom cranes will be supplied with a quick hitch jib arm. This jib arm ensures that the grapple saw can swing and rotate 360 degrees freely when the crane is in upper position without hitting the crane beam. It also makes hooking on/off of the GMT grapple saw set effortless.



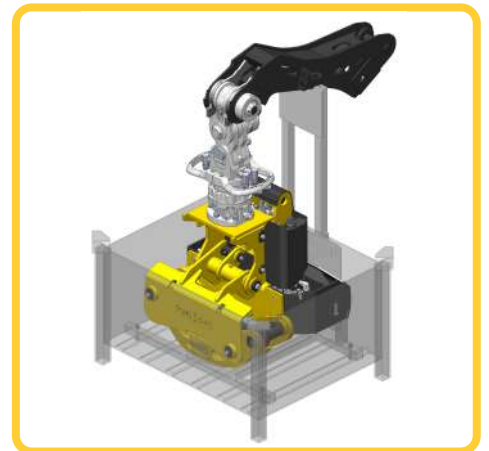




## Options for knuckle boom and spider crane

### Transport box

To make hooking on/off of your GMT grapple saw easier when your crane has to be folded for transport, GMT Equipment offers a practical transport box with bracket. The perfect accessory for safe transport and storage of your GMT grapple saw.



### Integration with controls

For controlling the TTC-system, a box transmitter (option C) could be considered to integrate with your crane controls.





## Telehandler

For telehandlers, a GMT grapple saw with TTC-system is recommended. A hose kit for hydraulic connection to the carrying vehicle is included with the set.

We recommend hard-wired integration with your telehandler controls to control the TTC-system. This might require the support of your local telehandler dealer.

- + robustness of the grapple saw set
- the TTC-system will be dedicated to this vehicle

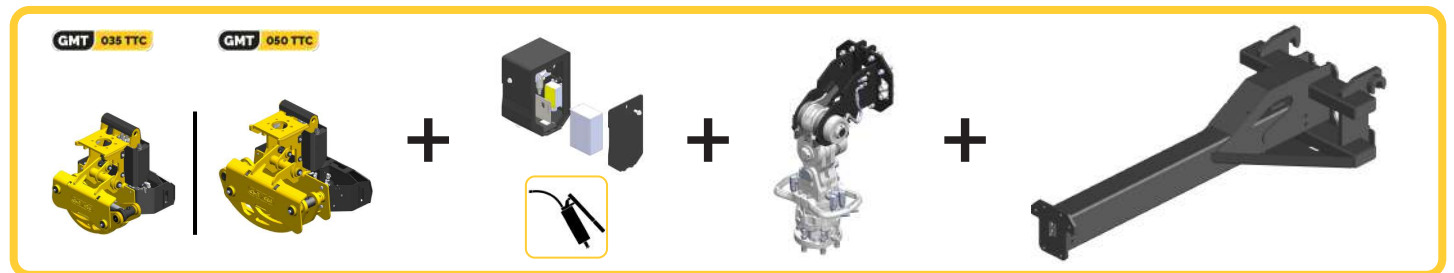
To prevent oil spray on the cabin and therefore ensure good visibility, grease lubrication of the chain comes as a standard.

- No oil spills
- +40% lifespan of saw blade
- +25% lifespan of saw chain



	<b>GMT 035</b>	720 kg   1590 lb
	<b>GMT 050</b>	865 kg   1910 lb

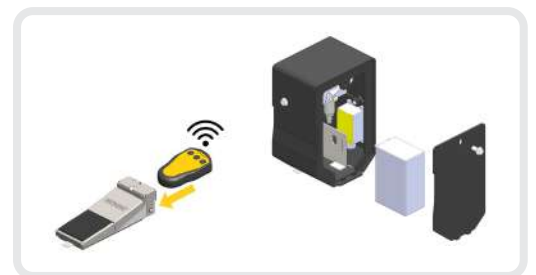
### Recommended setup:



### Alternative setups:

To make your set more flexible, the TTC-system can be controlled by a remote foot pedal:

- Partly remote: the receiver is powered from the telehandler and installed on the telehandler jib-arm together with TTC-components
- Full remote: receiver is battery-powered and installed on the grapple saw together with TTC-components



## Magni Kit

This dedicated kit simplifies installation and immediate operation on Magni telehandlers, making it a **plug-and-play solution**. This attachment, identified as ATT-08-005, is compatible with the entire Magni RTH range.







## Excavator

For excavators, all versions of the GMT grapple saw can be suitable. Whether the standard or the TTC-version of our grapple saw fits best, will depend on your tree job.

The hose kit for hydraulic connection to the carrying vehicle is not included with the GMT extension arm.

The GMT extension arm has a mounting surface on which you can bolt on any excavator quick hitch.

Feel free to create your own, or we can supply you with:

- MS03/MS08/CW05/CW10:
- MS10/CW20-40:
- Other brands/models on request



**GMT 035**

630 kg | 1390 lb

**GMT 050**

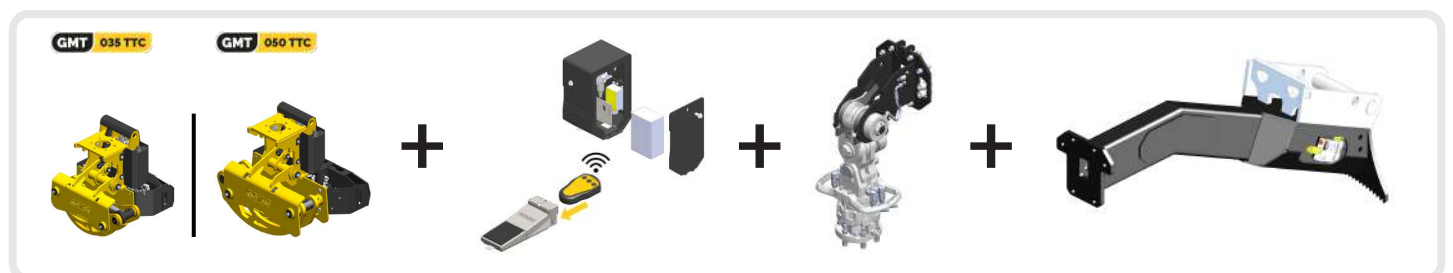
775 kg | 1710 lb

### Recommended setup:



### Alternative setup:

For controlling the TTC-system a remote foot pedal (option B) is included.



**GMT 035**

Could be used with a standard arm on machines of 8t and bigger

**GMT 050**

Could be used with a standard arm on machines of 10t and bigger

### Make your own jib arm:

If you want to use the GMT on smaller-sized machines, you could make your own shorter arm to your specifications.

Therefore, we supply you with the GMT T-shirt welding plate.







## Making Tree Work Safe and Efficient



### GMT Equipment

Kapelweg 46  
7134 RJ Vragender  
The Netherlands

Tel +31 (0)544-370315  
[www.gmt-equipment.com](http://www.gmt-equipment.com)  
[info@gmt-equipment.com](mailto:info@gmt-equipment.com)

